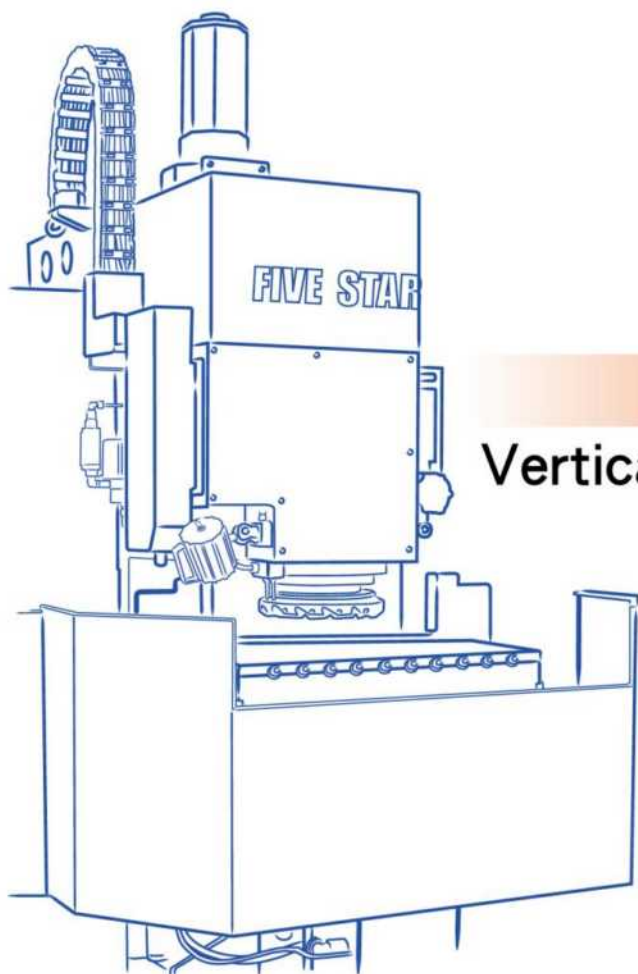
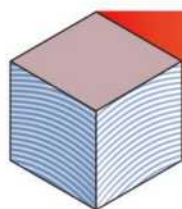
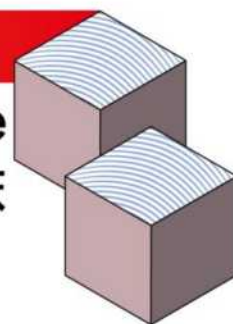


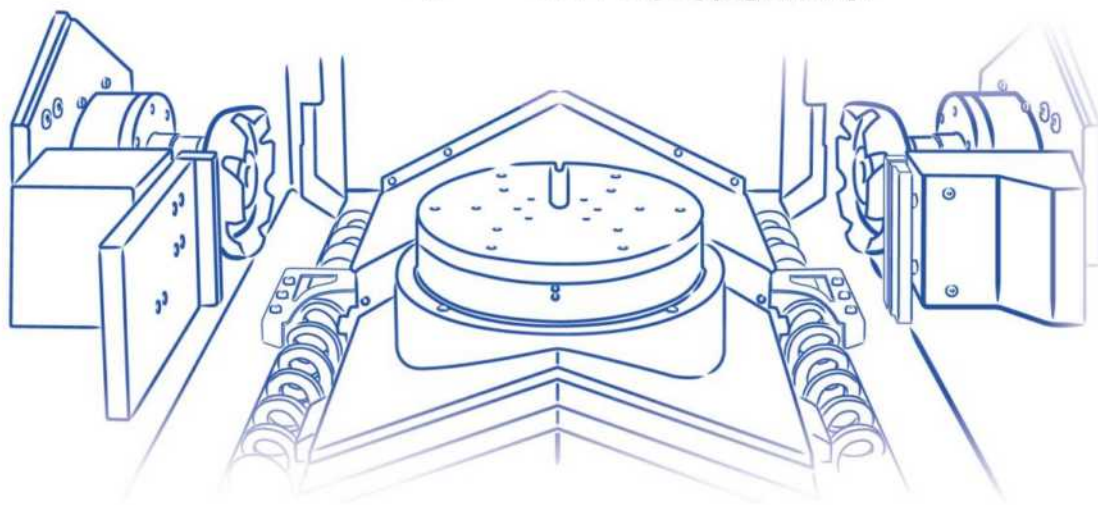
FIVE STAR PLATE SOLUTION SYSTEM



Vertical Plate Milling Machine
平面銑床

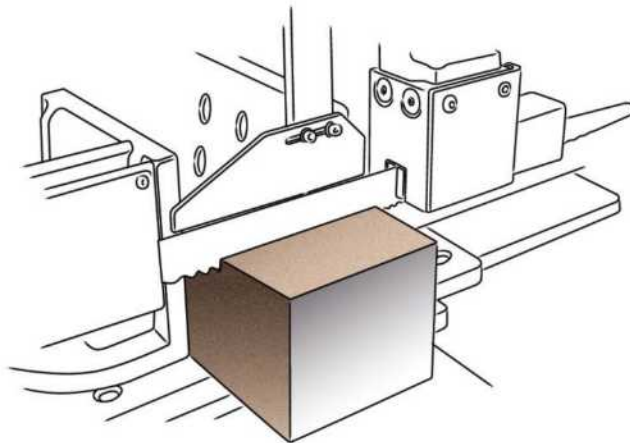


Duplex Milling Machine
CNC雙側銑床



FIVE STAR SEIKI CO., LTD
五星精機股份有限公司

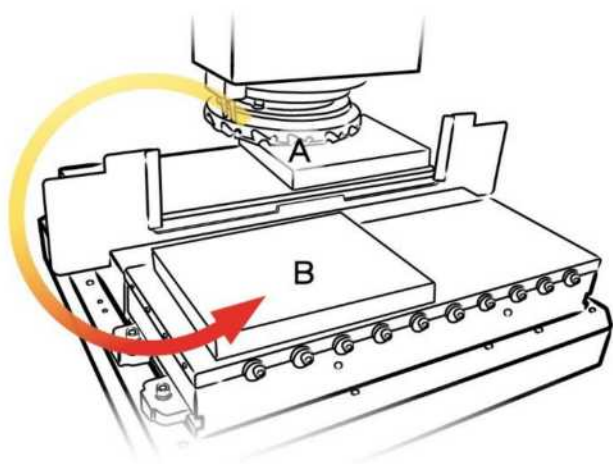




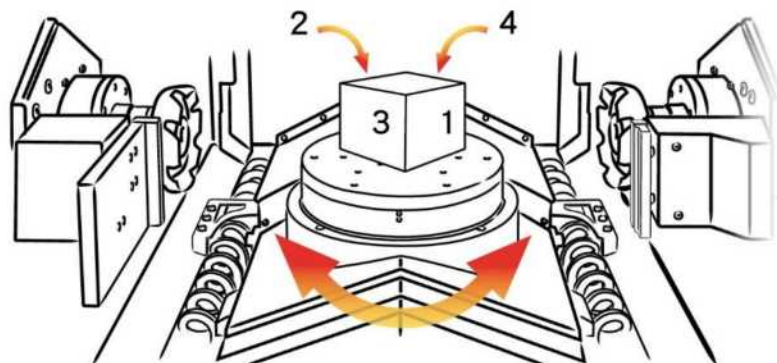
Vertical Plate Milling Machine TVM series



Duplex Milling Machine THM series



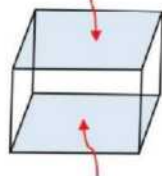
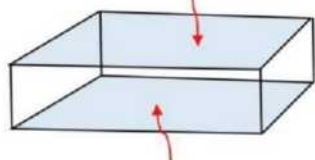
Up & bottom surface machining
change via magnetic turntable



One set up for four sides machining

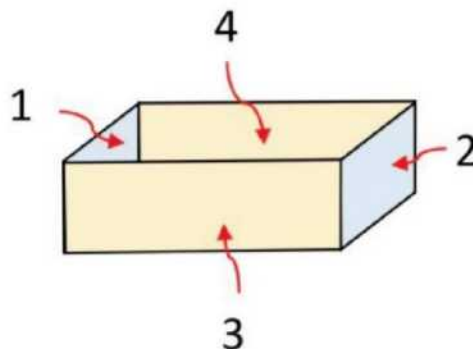
Side A (Up) A 面 (上)

A 面 (上) Side A (Up)



Side B (Bottom) B 面 (底)

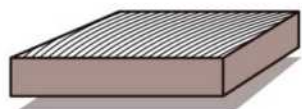
B 面 (底) Side B (Bottom)



Applicable Parts Machining

- Precise mold bases
- Manifold blocks
- Precise block/Singmg plate (square and rectangular shape)



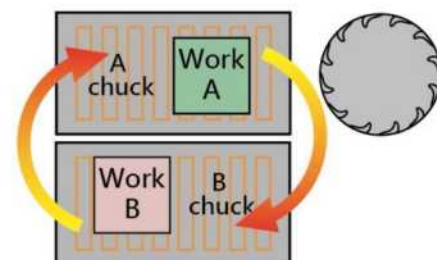


Vertical Plate Mill **TVM** series

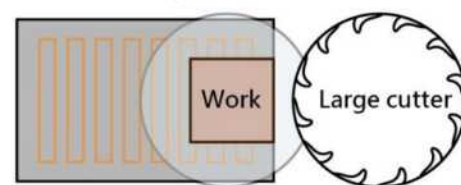
Turntable Type NC Milling Machine



Set up of next workpiece(A/B) can be done while milling a workpiece at the spindle side



Electromagnetic chuck



Cutters with $\varnothing 250, \varnothing 315, \varnothing 425$ diameter enables one pass machining

銑刀直徑

Cutter dia

主軸轉數

Spindle speed

主軸馬達

Spindle motor

最大加工範圍

Max machining size

TVM2360

$\varnothing 250$

60~350rpm

AC15/11KW

235X600X180mm

TVM3060

$\varnothing 315$

60~300rpm

AC18/15KW

300X600X180mm

TVM3080

$\varnothing 315$

60~300rpm

AC18/15KW

300X800X250mm

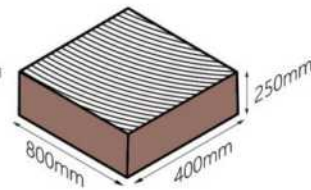
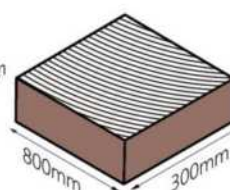
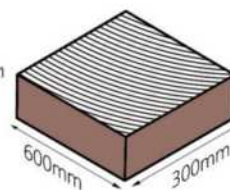
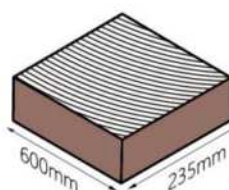
TVM4080

$\varnothing 425$

60~240rpm

AC18/15KW

400X800X250mm



機床佔地面積

Installation space

機械重量

Machine Weight

2700X2600X2500mm

7800kg

3500X2800X2660mm

10000kg

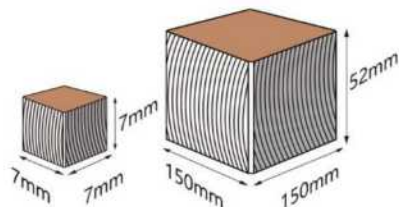
3500X2800X2660mm

10200kg

NC 雙側式銑床/Duplex Milling Machine **THM** Series

THM-150

4 surfaces milling
4 surfaces chamfering

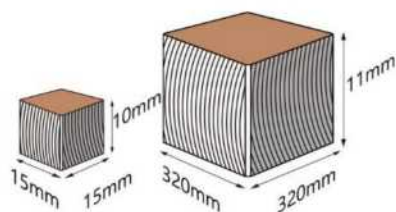


Cutter dia	Ø63mm
Spindle speed	100~2000rpm
Spindle motor	5.5kw
Max machining size	150X150X52mm
Min machining size	7x7x7mm
Installation space	1850X1650X2500
Machine Weight	2800kg



THM-320

4 surfaces milling
4 surfaces chamfering

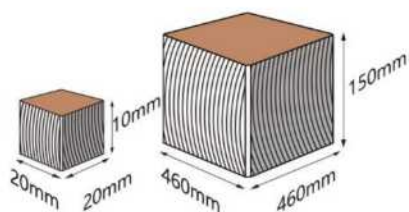


Cutter dia	Ø125mm
Spindle speed	100~1000rpm
Spindle motor	7.5kw
Max machining size	320X320X115mm
Min machining size	15x15x10mm
Installation space	2700X2100X1950
Machine Weight	5800kg



THM-460

4 surfaces milling
4 surfaces chamfering

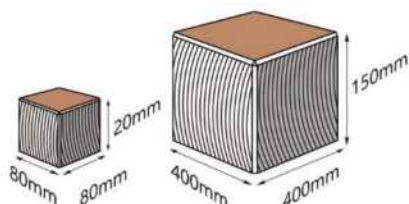


Cutter dia	Ø160mm
Spindle speed	100~1000rpm
Spindle motor	11kw
Max machining size	460X460X150mm
Min machining size	20x20x10mm
Installation space	3410X2800X2200
Machine Weight	7500kg



THM-460C

4 surfaces milling
12 surfaces chamfering



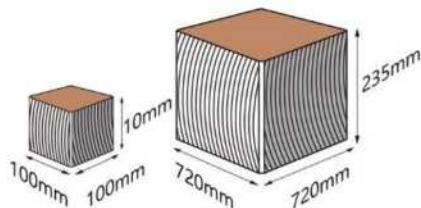
Cutter dia	Ø160mm
Spindle speed	100~1000rpm
Spindle motor	11kw
Max machining size	460X460X150mm
Min machining size	20x20x10mm
Installation space	3410X2800X2200
Machine Weight	13000kg



NC 雙側式銑床/Duplex Milling Machine **THM** Series

THM-720

4 surfaces milling
4 surfaces chamfering

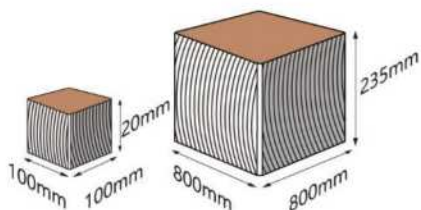


Cutter dia	Ø250mm
Spindle speed	10~350rpm
Spindle motor	22.5kw
Max machining size	720X720X235mm
Min machining size	100x100x10mm
Installation space	4200X3900X2600
Machine Weight	12700kg



THM-800

4 surfaces milling
4 surfaces chamfering

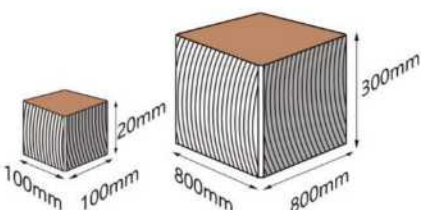


Cutter dia	Ø250mm
Spindle speed	10~350rpm
Spindle motor	22.5kw
Max machining size	800X800X235mm
Min machining size	100x100x20mm
Installation space	4500X4024X2600
Machine Weight	16000kg



THM-800G

4 surfaces milling
4 surfaces chamfering

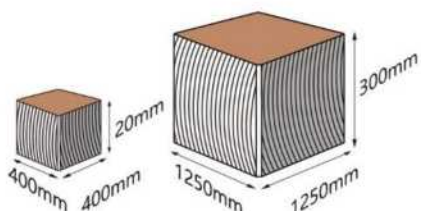


Cutter dia	Ø315mm
Spindle speed	10~350rpm
Spindle motor	22.5kw
Max machining size	800X800X300mm
Min machining size	100x100x20mm
Installation space	4500X4024X2600
Machine Weight	18800kg



THM-1200

4 surfaces milling
4 surfaces chamfering



Cutter dia	Ø315mm
Spindle speed	10~300rpm
Spindle motor	30kw
Max machining size	1250X1250X300mm
Min machining size	400x400x20mm
Installation space	5800X6500x3200
Machine Weight	26500kg

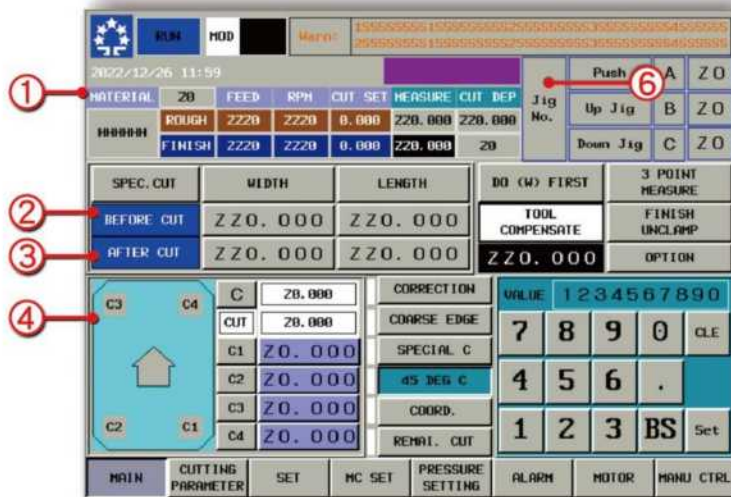


THM Series THM系列

Easy Dialogue Operation System

採用FANUC觸碰螢幕，簡易對話數據輸入模式，依材料種類建立切削條件模組，輸入材料尺寸、完成尺寸，即可進行高精度的四面加工。

Using FANUC touch screen, simple dialogue data input mode establishing cutting module, input material size and complete the size to perform high-precision 4 side machining

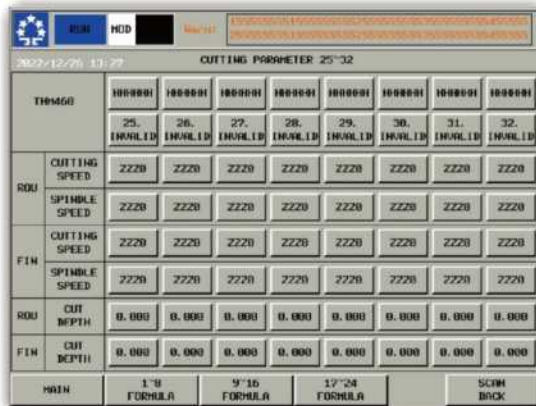


例:操作順序(四面加工)

1. 材料種類輸入
2. 材料尺寸輸入
3. 完成尺寸輸入
4. 倒角選擇
5. 循環啟動
6. 放置治具工件鎖緊
7. 再次循環啟動
8. 自動切削進行
9. 切削完了

Example: Operation sequence side (4 sides machining)

1. Material code input
2. Material size input
3. Complete size input
4. Chamfer Selection
5. Cycle start
6. Place the fixture and clamp the workpiece
7. Cycle start again
8. Auto cutting process
9. Finished cutting



切削參數1-32組

CUTTING PARAMETER 1~32Sets



FANUC NC 操作面盤

FANUC NC operation panel



主軸切削負載設定畫面

Spindle cutting load setting screen



多邊角切削畫面(特別附屬品)

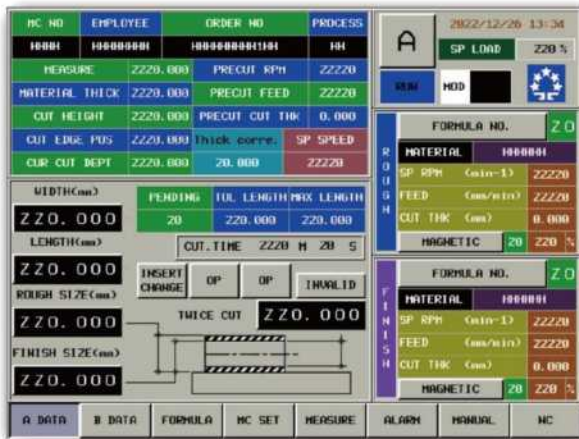
Polygon cutting screen(option accessory)

TVM Series TVM系列

Easy Dialogue Operating System

採用FANUC觸碰螢幕，簡易對話數據輸入模式：

Using FANUC touch screen, simple dialogue data input



A盤画面 Disk A screen

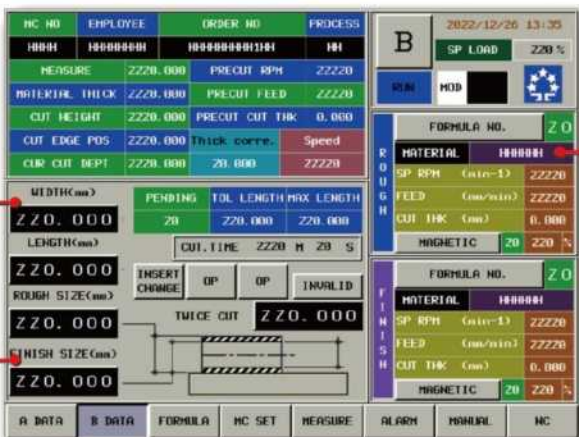
依材料種類建立切削條件模組，輸入材料尺寸，完成尺寸即可進行高精度的平面加工。

二組電磁盤(A/B),A盤加工進行中，B盤可替換工件B、切削數據輸入。

Establishing cutting module according to material code input material size(Before & After cutting site) and complete the size to perform high-precision surface machining.

Two sets of electric disks(A/B). Disk A is being processed.

Disk B can replace workpiece B. Cutting data input.



B盤画面 Disk A screen

例:操作順序(平面加工)

- 1.材料種類輸入
- 2.加工材料寬度、長度、厚度尺寸輸入
- 3.放置工件電磁ON
- 4.循環啓動ON
- 5.切削完了

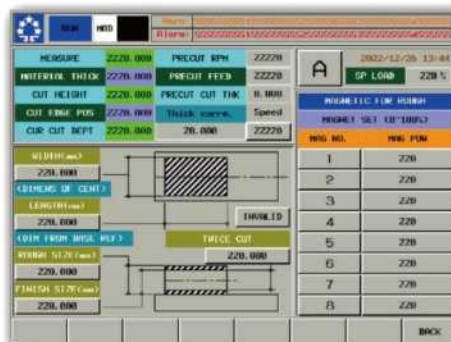
Example:Operation sequence(surface machining)

- 1.Material code input
- 2.Material width,length,thickness (Before & After)input
- 3.Place workpiece magnetic ON
- 4.Cycle start
- 5.Finished



切削條件設定畫面

Cutting setting screen



磁力強度設定畫面

Magnetic strength setting screen



刀具TOOL LIFE画面設計

TOOL LIFE screen setting



五星精機股份有限公司
41263台灣台中市大里區草堤路221號
TEL:+886-4-24938130
FAX:+886-4-24933420

FIVE STAR SEIKI CO.,LTD.
No.221,Caoti Rd.,Dali Dist.,Taichung City
41263,Taiwan(R.O.C.)
<http://WWW.fs-seiki.com>
E-mail:fs.seiki@msa.hinet.net